

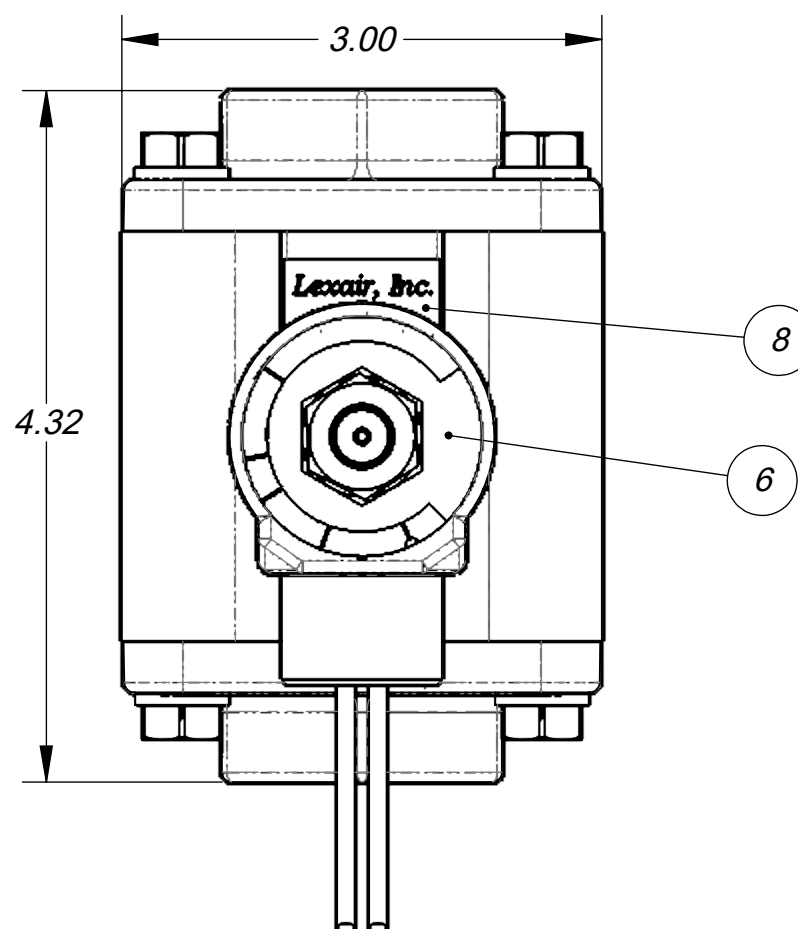
C310416

310416-SM-CC-EC-VV

| ITEM NO. | PART NUMBER | DESCRIPTION | QTY. |
|----------|--------------|---------------------------------|------|
| 1 | 01-0201 | LOCKWASHER, REGULAR, 5/16, ZINC | 8 |
| 2 | 01-0706 | SCREW, 5/16-18 X .75 ZN | 8 |
| 3 | 01-2023-2 | SCREW, RIVET, #2 X .188, SS | 2 |
| 4 | 03-1179 | BODY, P/P SOL. ADAPTOR | 1 |
| 5 | 03-1180 | EXHAUST ADAPTOR | 1 |
| 6 | 03-4001 | NAMEPLATE, SERIES 20 SOL. OPP. | 1 |
| 7 | 04-01-010 | O-RING, BUNA 70, #010 | 1 |
| 8 | 20-1889 | NAME PLATE, TUBE-O-MATIC | 1 |
| 9 | 20-1892 | BODY, 3/4, 1 NPT, T-O-M | 1 |
| 10 | SEE TBL (CC) | CENTER CORE | 1 |
| 11 | SEE TBL (EC) | END CAP | 2 |
| 12 | SEE TBL (SM) | SLEEVE | 1 |
| 13 | SEE TBL (VV) | SOLENOID ASSY | 1 |

NOTES:

1. PILOT PRESSURE TO MEDIA PRESSURE RATIO: 1:1.
2. OPERATING PRESSURE: 150 PSI MAX.
3. TEMPERATURE RANGE: -30° F TO 225° F.
4. PRIMARY OPERATOR: DIRECT SOLENOID OPERATOR.
5. SERVICE MEDIA: LIQUIDS AND INERT GASES.
6. SLEEVE MATERIAL: SEE TABLE SLEEVE MAT. OPTIONS (SM) FOR ALL OTHERS CONSULT THE FACTORY.
7. SOLENOID VOLTAGE: AC OR DC.
8. FOR MAXIMUM SLEEVE LIFE, THE PILOT TO MEDIA PRESSURE DIFFERENTIAL, SHOULD NOT EXCEED 20 PSI. FOR MEDIA PRESSURE BELOW 50 PSI, THE PILOT PRESSURE IS MEDIA PRESSURE PLUS 15 PSI.



SLEEVE MATERIAL OPTIONS (SM)

| CODE | MATERIAL | PART NO. |
|------|----------|----------|
| STD | BUNA - N | 20-1073 |
| 26 | VITON | 20-1074 |
| 29 | EPR | 20-1075 |

CENTER CORE OPTIONS (CC)

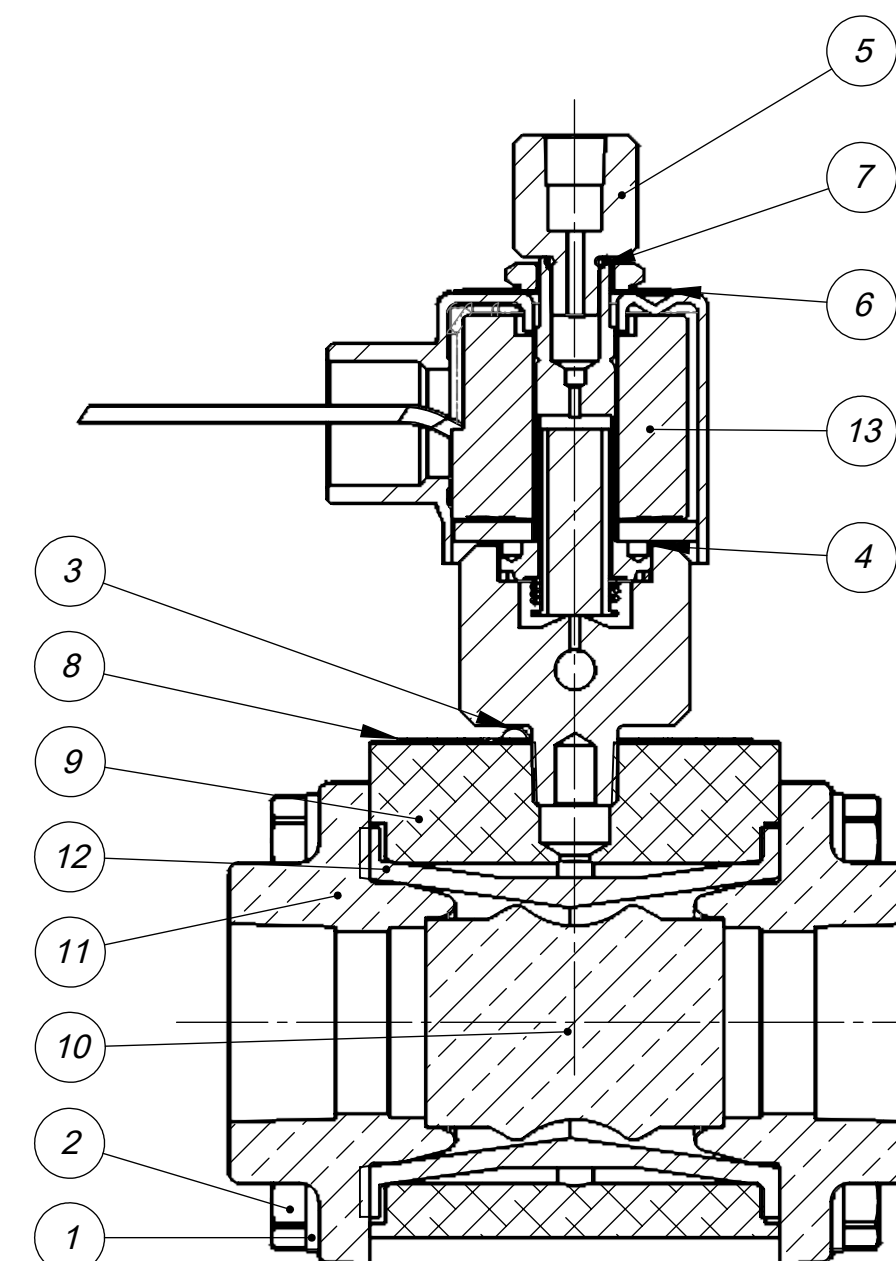
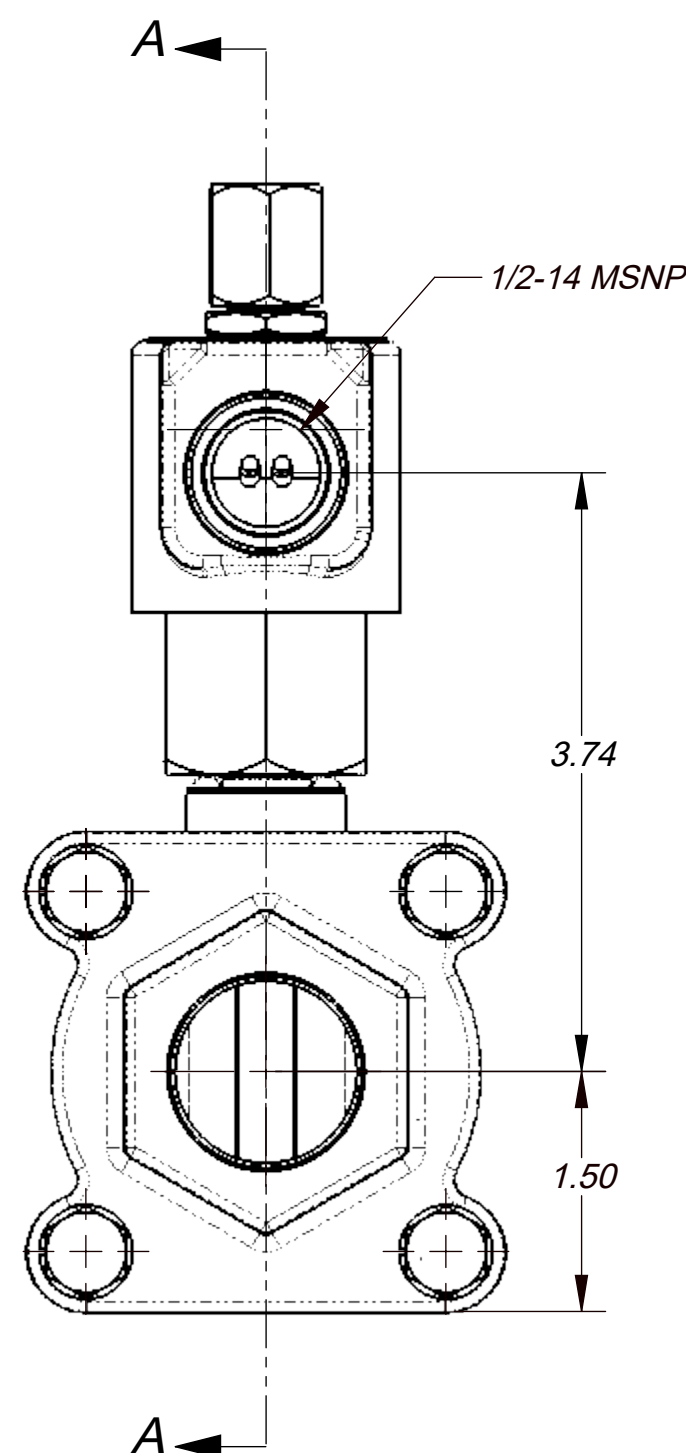
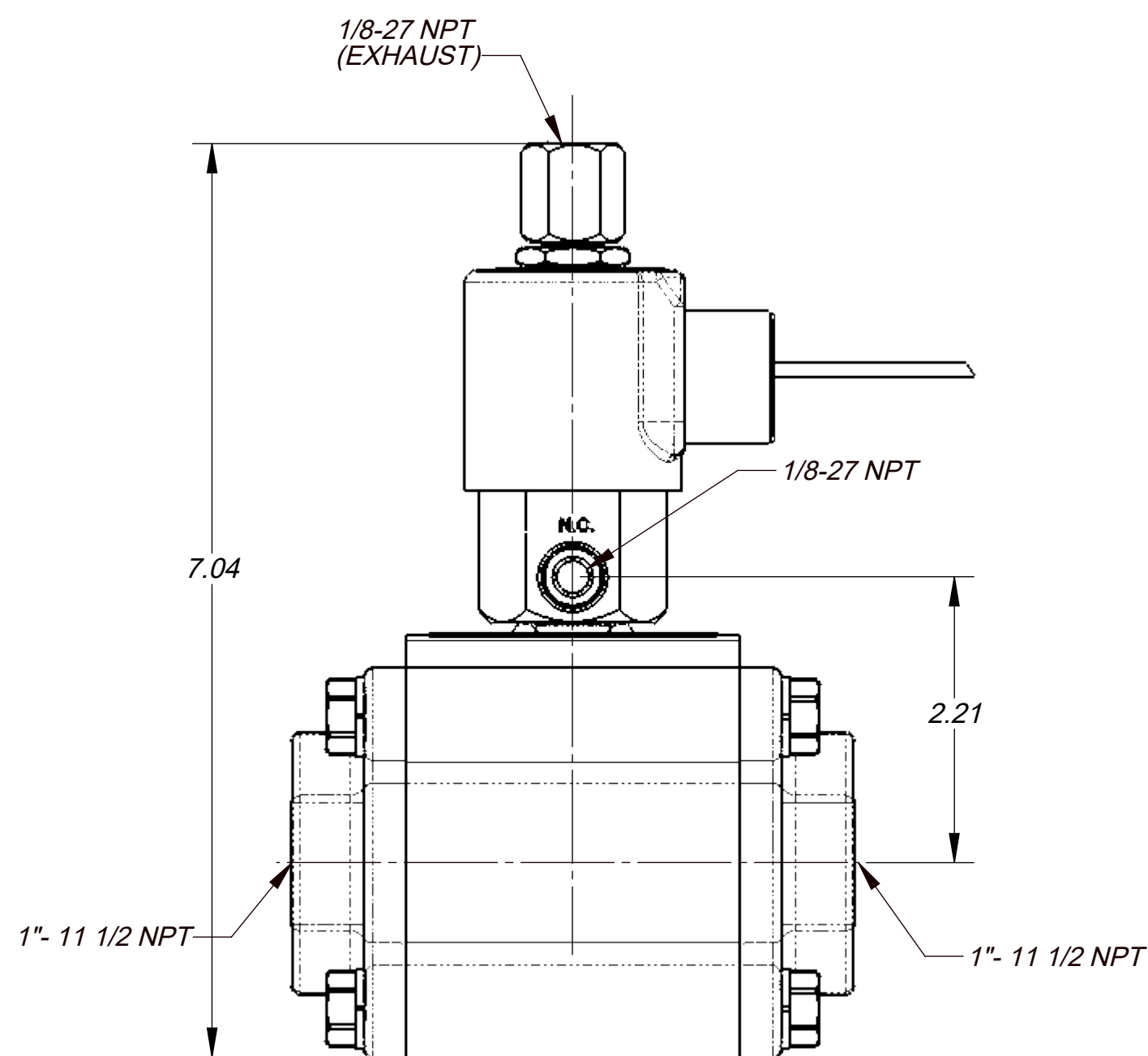
| CODE | MATERIAL | PART NO. |
|------|--------------|----------|
| STD | NI PLT BRASS | 20-1095 |
| 43 | PVC | 20-1342 |
| 45 | 316 STNLESS | 20-1110 |
| 46 | TEFLON | 20-1107 |

END CAP OPTIONS (EC)

| CODE | MATERIAL | PART NO. |
|------|--------------|----------|
| STD | NI PLT BRNZE | 20-1090 |
| 57 | PVC | 20-1083 |
| 59 | 316 STNLESS | 20-1093 |

SOLENOID OPTIONS (VV)

| CODE | VOLTAGE | PART NO. |
|------|-----------|----------|
| -1 | 120V/60Hz | 03-3701 |
| -2 | 240V/60Hz | 03-3702 |
| -3 | 480V/60Hz | 03-3703 |
| -4 | 6V DC | 03-3704 |
| -5 | 12V DC | 03-3705 |
| -6 | 24V DC | 03-3706 |
| -7 | 24V/60Hz | 03-3707 |



SECTION A-A
SCALE 1:1.2

THIS DOCUMENT AND ITS CONTENTS ARE THE PROPERTY OF LEXAIR, INC. THEY ARE FURNISHED TO YOU ON THE FOLLOWING CONDITIONS: NO RIGHT OR LICENSE IN RESPECT OF THIS DOCUMENT OR ITS CONTENTS, IS GIVEN OR WANTED IN SUPPLYING THIS DOCUMENT TO YOU. THIS DOCUMENT OR ITS CONTENTS ARE NOT TO BE USED OR TREATED IN ANY MANNER INCONSISTENT WITH THE RIGHTS OF LEXAIR, INC. OR TO ITS DETRIMENT AND ARE NOT TO BE COPIED, REPRODUCED, OR DISCLOSED OF, EXCEPT WITH ITS PRIOR WRITTEN CONSENT.

REVISIONS

| REV. | DATE | DESCRIPTION |
|------|----------|---|
| B | 06/13/10 | REDRAWN TO CURRENT ENG. STDS. ECL: 06/13 10-16-06 HWP TPO |
| C | 06/22/21 | REDRAWN TO CURRENT ENG. STDS. ECL: 21032 06-22-21 TES |

| | | |
|---|-----------------------------|---|
| Tolerances Unless Otherwise Specified: TYPE FINISHED AS CAST DEC .00 ± .015" ± .030" DEC .000 ± .005" ± .010" FRACTIONAL ± 1/64" ± 1/32" ANGLES * ± 1/2° ± 1° FINISH 175 μ in. | MATERIAL SPEC. SEE TABLE | PC. NO.: 310416-X |
| | PROCESS SPEC. SEE TABLE | MADE FROM: |
| SO, T-O-M 1" NPT | | MODEL FILE: 310416.SLDASM |
| DRAWN HWP CHECKED TPO APRVD. TPO 10-16-06 10-16-06 10-16-06 | | CAD FILE: 310416.sldrw C 310416 SHEET NO. 1 of 1 SHEETS SCALE 1:1 APPROX. WT. 5.330 lbs. |

ECL: 06/13